

YG-DCO-011-B

Yorkshire Green Energy Enablement (GREEN) Project

Volume 2

Document 2.4.3 Land Affected Plan Section C

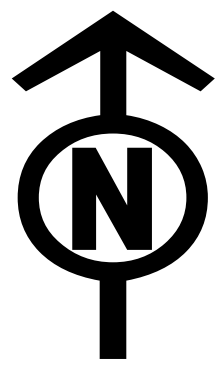
Final Issue A

November 2022

Planning Inspectorate Reference: EN020024

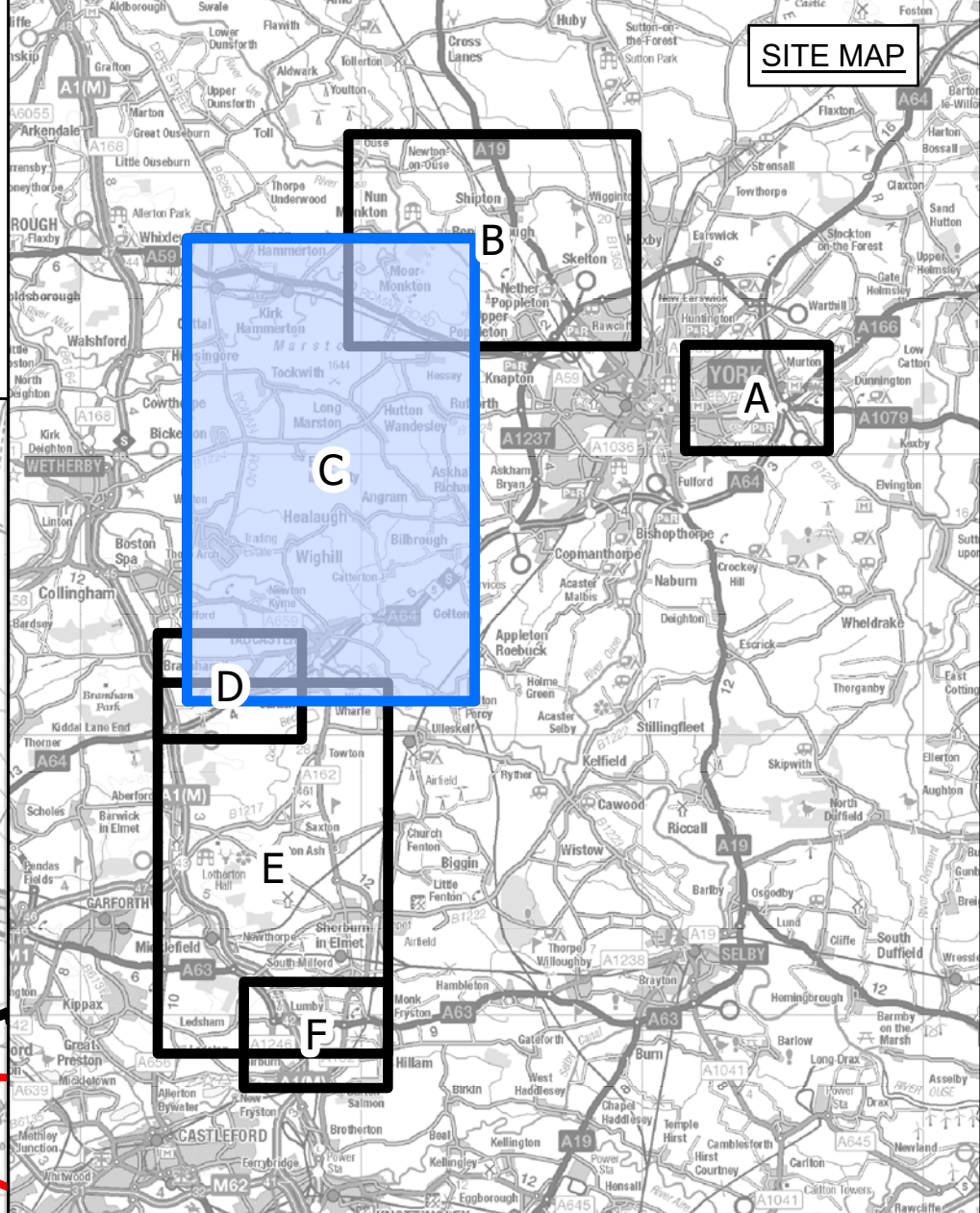
Infrastructure Planning (Applications: Prescribed Forms and
Procedure) Regulations 2009 Regulation 5(2)(i) - (i)

nationalgrid

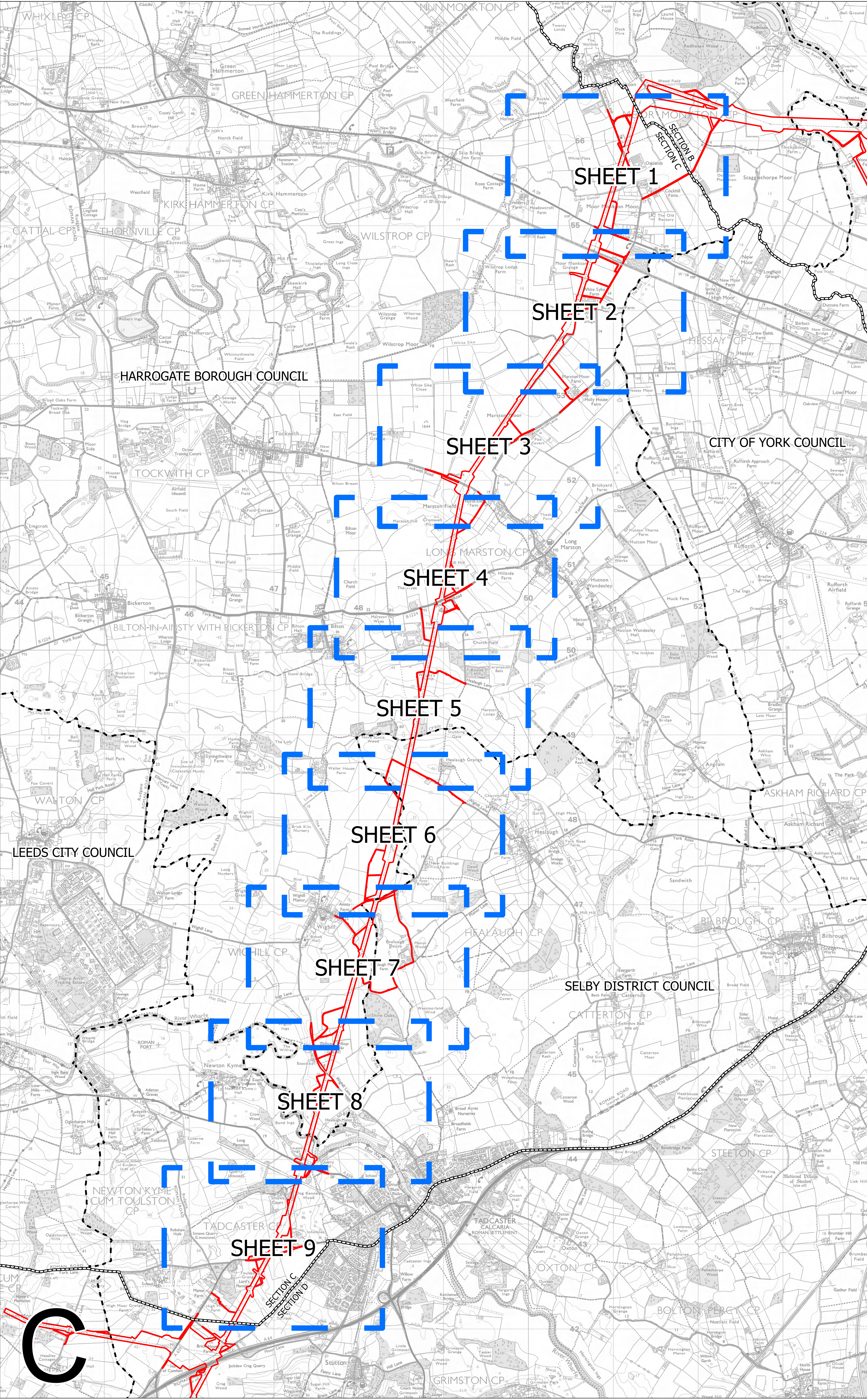


NATIONAL GRID (YORKSHIRE GREEN ENERGY ENABLEMENT PROJECT) ORDER
 LAND AFFECTED KEY PLAN
 REGULATION 5(2)(i) - (i)
 SECTION C, SHEET 1 OF 1

SITE MAP



- LEGEND**
- LOCAL AUTHORITY BOUNDARY
 - - - SECTION BOUNDARY
 - ORDER LIMITS
 - SHEET INDEX



Notes

This drawing is scaled at paper size A0, therefore any prints taken at smaller sizes will affect accuracy of the measurement units and should not be scaled against.

For additional detail on the plan suites, please refer to Document 2.3 Plan Guidance Document, located in Volume 2 of the DCO Application.

The local authorities' boundaries and titles are correct at the time of submission. North Yorkshire County Council and its 7 districts are expected to form a new single council (North Yorkshire Council) on 1 April 2023.

Coordinate System: British National Grid
 Sheet X Centroid Coordinate: 448887 Sheet Y Centroid Coordinate: 449414

0 200 400 800 1,200 1,600
 Meters

BACKGROUND MAPPING INFORMATION HAS BEEN REPRODUCED FROM THE ORDNANCE SURVEY BY PERMISSION OF ORDNANCE SURVEY OF THE CONTROLLER OF HER MAJESTY'S STATIONERY OFFICE. CROWN COPYRIGHT ORDNANCE SURVEY © BLUESKY INTERNATIONAL LTD © NATIONAL GRID ELECTRICITY - 100024241.

| Issue | Date | Remarks | Drawn | Checked | Approved |
|-------|------------|--------------------|-------|---------|----------|
| A | 01/11/2022 | FOR DCO SUBMISSION | JHa | SF | EMD |

Title

NATIONAL GRID (YORKSHIRE GREEN ENERGY ENABLEMENT PROJECT) ORDER
 LAND AFFECTED KEY PLAN
 REGULATION 5(2)(i) - (i)
 SECTION C, SHEET 1 OF 1

nationalgrid

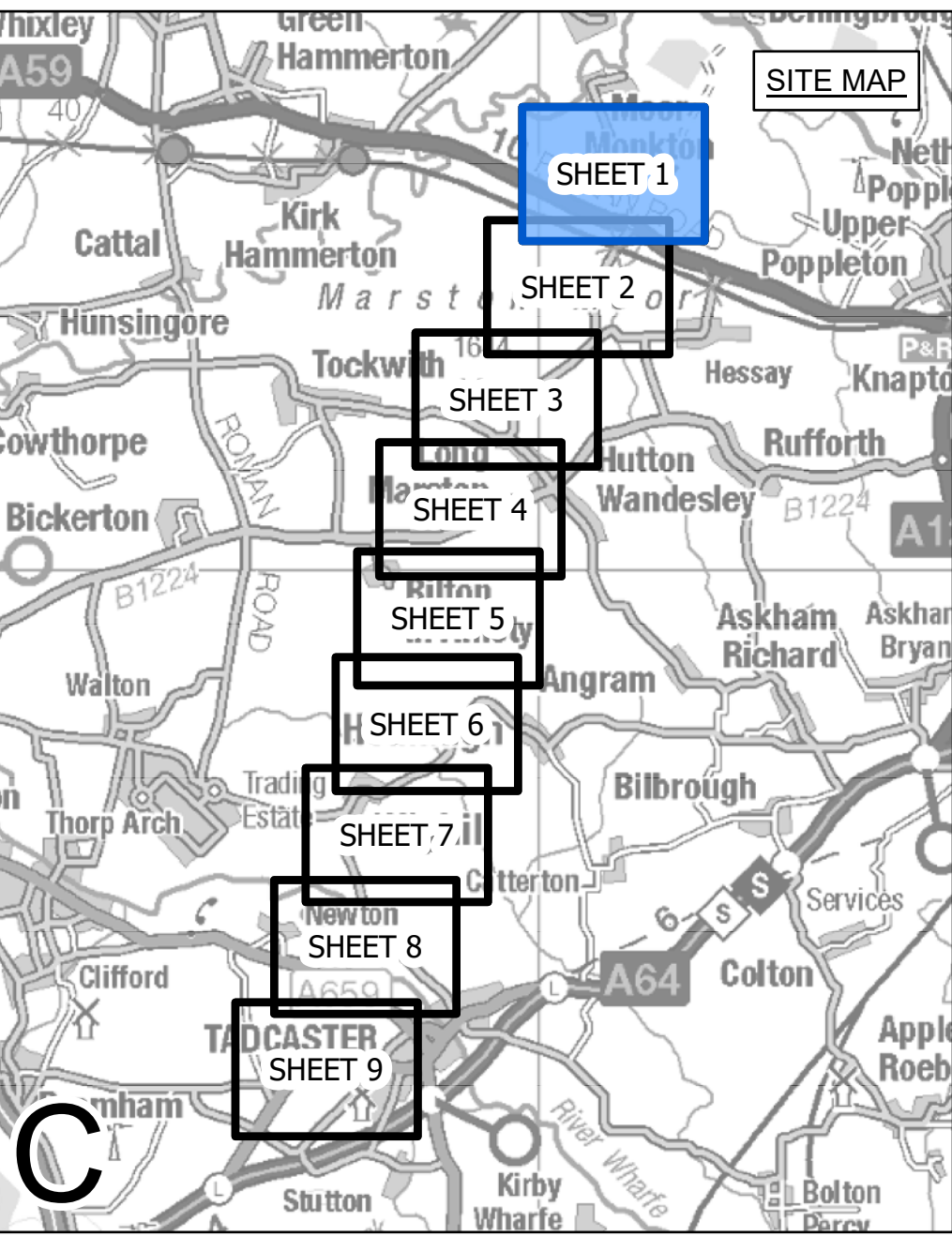
Application Number: EN020024

National Grid Drawing Reference: DCO_C/LA/KP/01

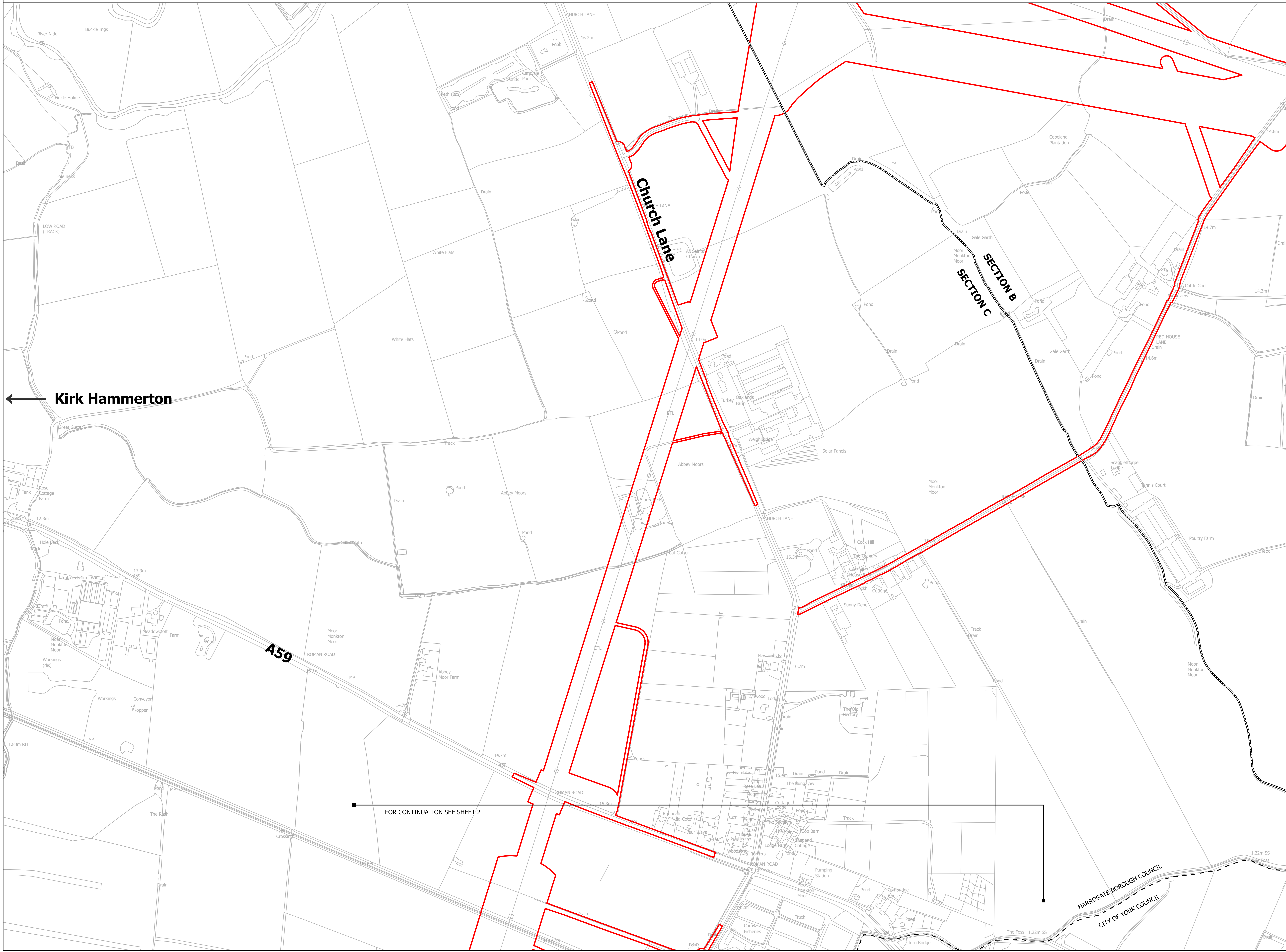
| Scale | Sheet Size | Sheet | Issue |
|----------|------------|--------------|-------|
| 1:15,000 | A0 | SHEET 1 OF 1 | A |



NATIONAL GRID (YORKSHIRE GREEN ENERGY ENABLEMENT PROJECT) ORDER
 LAND AFFECTED PLAN
 REGULATION 5(2)(i) - (i)
 SECTION C, SHEET 1 OF 9



- LEGEND**
- - - LOCAL AUTHORITY BOUNDARY
 - ▬ SECTION BOUNDARY
 - ▭ ORDER LIMITS



← Kirk Hammerton

← FOR CONTINUATION SEE SHEET 2

Notes

This drawing is scaled at paper size A0, therefore any prints taken at smaller sizes will affect accuracy of the measurement units and should not be scaled against.

For additional detail on the plan suites, please refer to Document 2.3 Plan Guidance Document, located in Volume 2 of the DCO Application.

The local authorities' boundaries and titles are correct at the time of submission. North Yorkshire County Council and its 7 districts are expected to form a new single council (North Yorkshire Council) on 1 April 2023.

Coordinate System: British National Grid
 Sheet X Centroid Coordinate: 451042 Sheet Y Centroid Coordinate: 455585

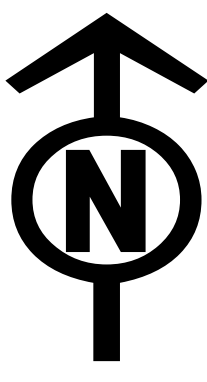
0 100 200 300 Meters

BACKGROUND MAPPING INFORMATION HAS BEEN REPRODUCED FROM THE ORDNANCE SURVEY BY PERMISSION OF ORDNANCE SURVEY OF THE CONTROLLER OF HER MAJESTY'S STATIONERY OFFICE. CROWN COPYRIGHT ORDNANCE SURVEY ©. BLUESKY INTERNATIONAL LTD ©. NATIONAL GRID ELECTRICITY - 100024241.

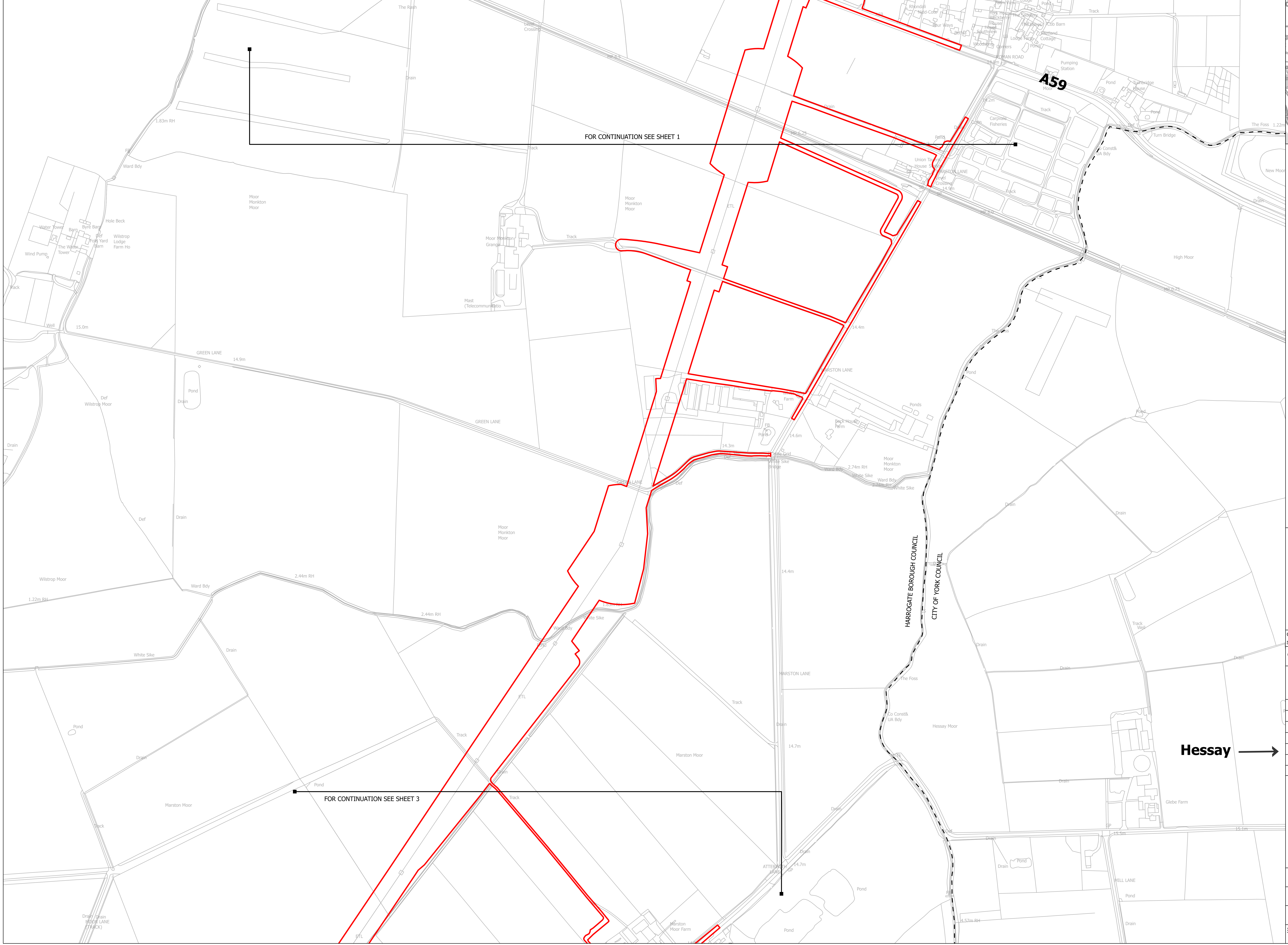
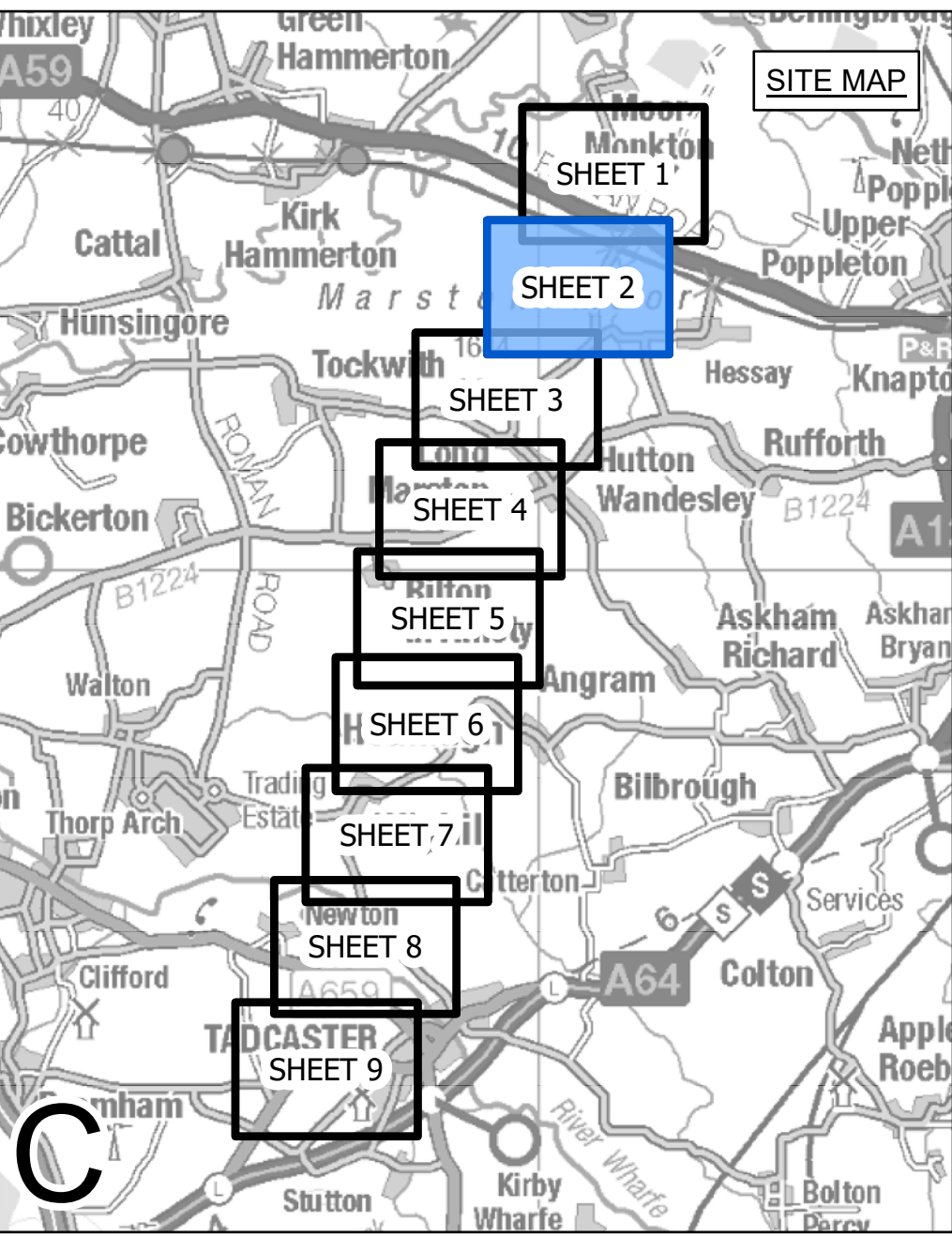
| Issue | Date | Remarks | Drawn | Checked | Approved |
|-------|------------|--------------------|-------|---------|----------|
| A | 01/11/2022 | FOR DCO SUBMISSION | JHa | SF | EMD |

**NATIONAL GRID (YORKSHIRE GREEN ENERGY ENABLEMENT PROJECT) ORDER
 LAND AFFECTED PLAN
 REGULATION 5(2)(i) - (i)
 SECTION C, SHEET 1 OF 9**

| | | | | |
|---------------------------------|------------|----------------|-------|--|
| Application Number | | EN020024 | | |
| National Grid Drawing Reference | | DCO_C/LA/PS/01 | | |
| Scale | Sheet Size | Sheet | Issue | |
| 1:2,500 | A0 | SHEET 1 OF 9 | A | |



NATIONAL GRID (YORKSHIRE GREEN ENERGY ENABLEMENT PROJECT) ORDER
 LAND AFFECTED PLAN
 REGULATION 5(2)(i) - (i)
 SECTION C, SHEET 2 OF 9



- LEGEND**
- LOCAL AUTHORITY BOUNDARY
 - SECTION BOUNDARY
 - ▭ ORDER LIMITS

Notes

This drawing is scaled at paper size A0, therefore any prints taken at smaller sizes will affect accuracy of the measurement units and should not be scaled against.

For additional detail on the plan suites, please refer to Document 2.3 Plan Guidance Document, located in Volume 2 of the DCO Application.

The local authorities' boundaries and titles are correct at the time of submission. North Yorkshire County Council and its 7 districts are expected to form a new single council (North Yorkshire Council) on 1 April 2023.

Coordinate System: British National Grid
 Sheet X Centroid Coordinate: 450545 Sheet Y Centroid Coordinate: 453987



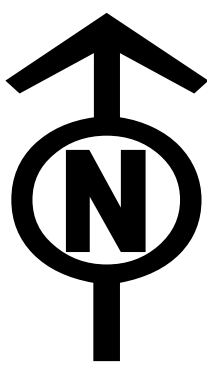
BACKGROUND MAPPING INFORMATION HAS BEEN REPRODUCED FROM THE ORDNANCE SURVEY BY PERMISSION OF ORDNANCE SURVEY OF THE CONTROLLER OF HER MAJESTY'S STATIONERY OFFICE. CROWN COPYRIGHT ORDNANCE SURVEY ©. BLUESKY INTERNATIONAL LTD ©. NATIONAL GRID ELECTRICITY - 100024241.

| Issue | Date | Remarks | Drawn | Checked | Approved |
|-------|------------|--------------------|-------|---------|----------|
| A | 01/11/2022 | FOR DCO SUBMISSION | JHa | SF | EMD |

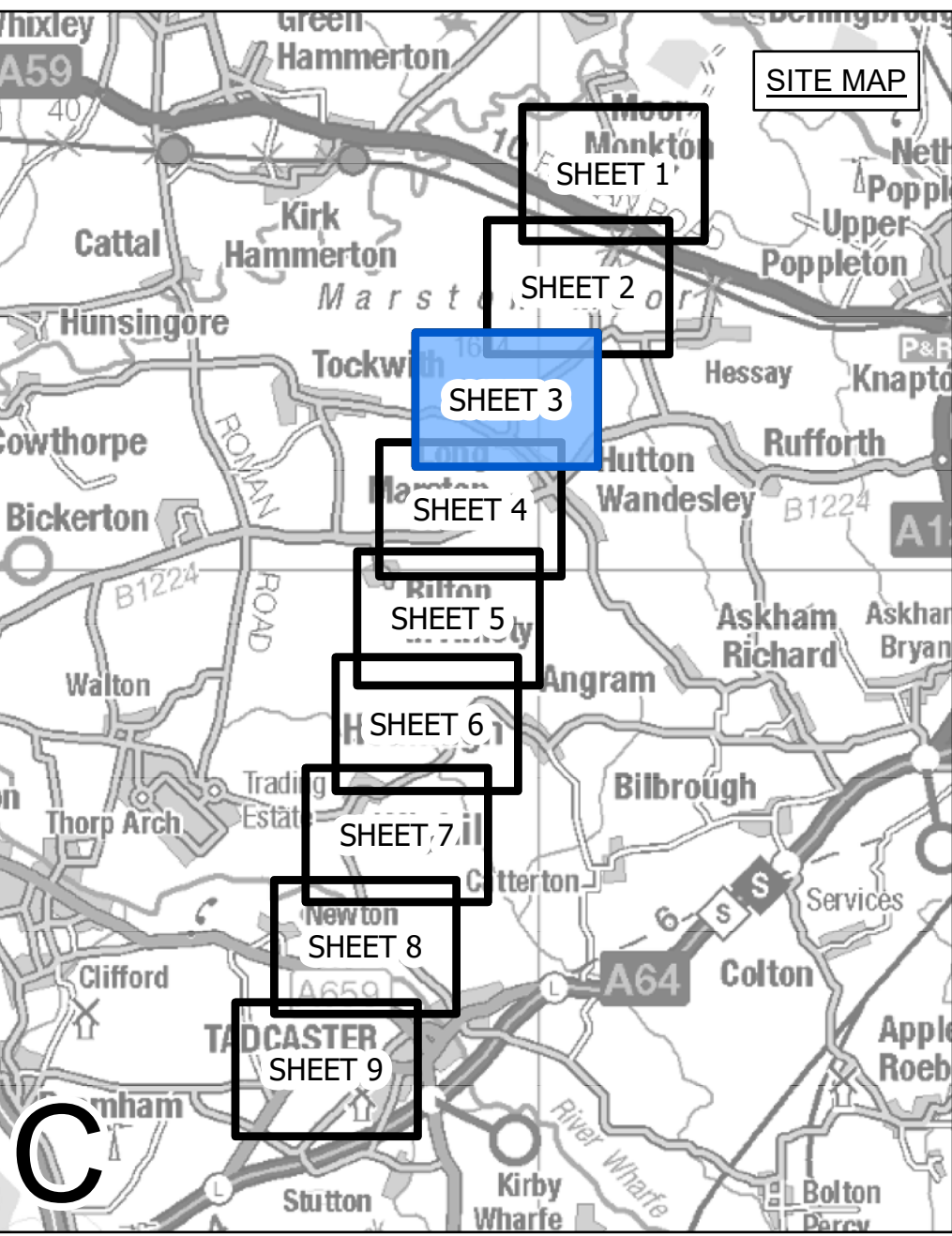
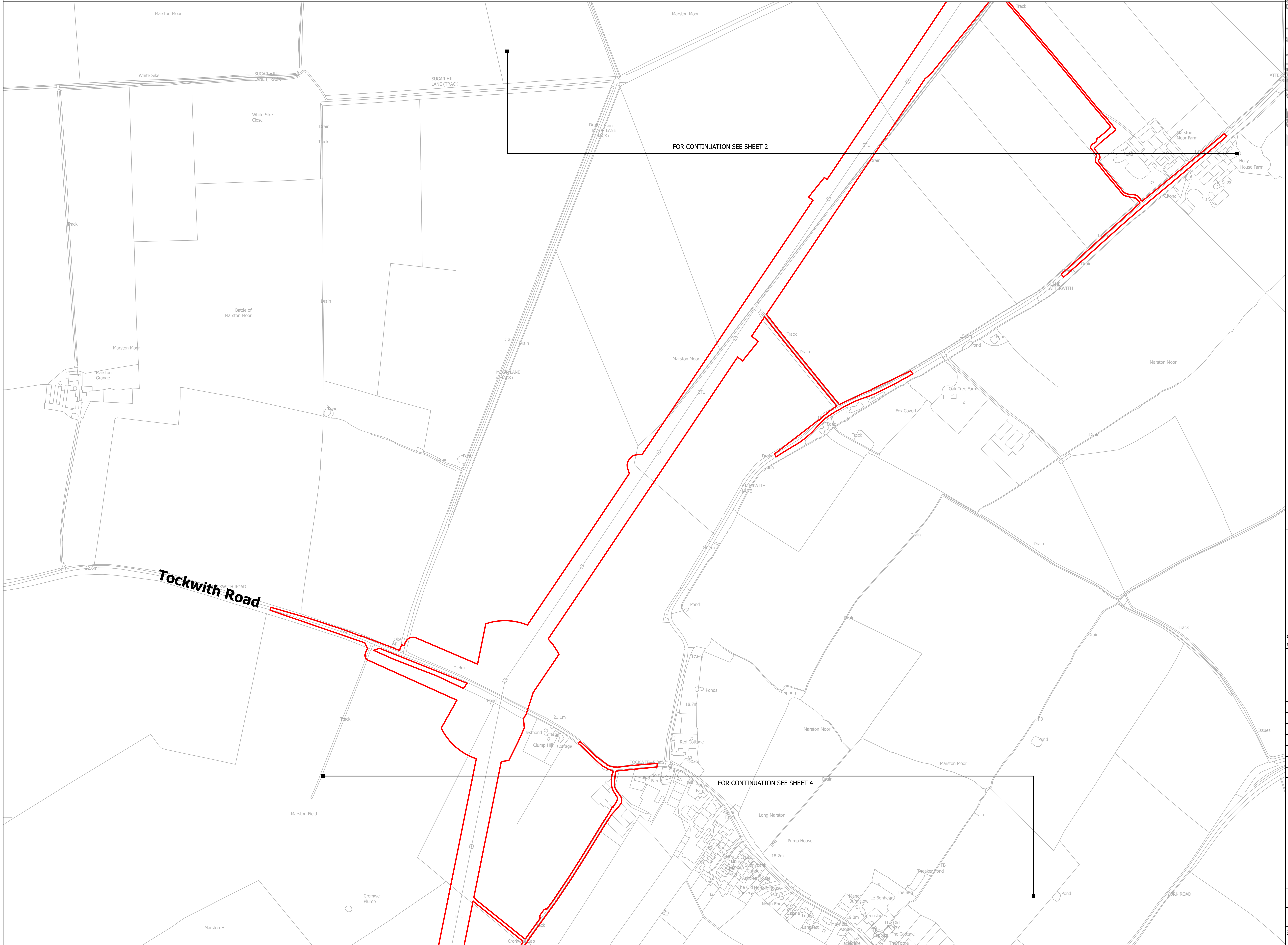
Title

NATIONAL GRID
 (YORKSHIRE GREEN ENERGY
 ENABLEMENT PROJECT) ORDER
 LAND AFFECTED PLAN
 REGULATION 5(2)(i) - (i)
 SECTION C, SHEET 2 OF 9

| | | | |
|---------------------------------|------------|--------------|-------|
| Application Number | | EN020024 | |
| National Grid Drawing Reference | | | |
| DCO_C/LA/PS/02 | | | |
| Scale | Sheet Size | Sheet | Issue |
| 1:2,500 | A0 | SHEET 2 OF 9 | A |



NATIONAL GRID (YORKSHIRE GREEN ENERGY ENABLEMENT PROJECT) ORDER
 LAND AFFECTED PLAN
 REGULATION 5(2)(i) - (i)
 SECTION C, SHEET 3 OF 9



LEGEND

- - - LOCAL AUTHORITY BOUNDARY
- SECTION BOUNDARY
- ▭ ORDER LIMITS

Notes

This drawing is scaled at paper size A0, therefore any prints taken at smaller sizes will affect accuracy of the measurement units and should not be scaled against.

For additional detail on the plan suites, please refer to Document 2.3 Plan Guidance Document, located in Volume 2 of the DCO Application.

The local authorities' boundaries and titles are correct at the time of submission. North Yorkshire County Council and its 7 districts are expected to form a new single council (North Yorkshire Council) on 1 April 2023.

Coordinate System: British National Grid
 Sheet X Centroid Coordinate: 449533 Sheet Y Centroid Coordinate: 452403

BACKGROUND MAPPING INFORMATION HAS BEEN REPRODUCED FROM THE ORDNANCE SURVEY BY PERMISSION OF ORDNANCE SURVEY OF THE CONTROLLER OF HER MAJESTY'S STATIONERY OFFICE. CROWN COPYRIGHT ORDNANCE SURVEY ©. BLUESKY INTERNATIONAL LTD ©. NATIONAL GRID ELECTRICITY - 100024241.

| Issue | Date | Remarks | Drawn | Checked | Approved |
|-------|------------|--------------------|-------|---------|----------|
| A | 01/11/2022 | FOR DCO SUBMISSION | JHa | SF | EMD |

Title

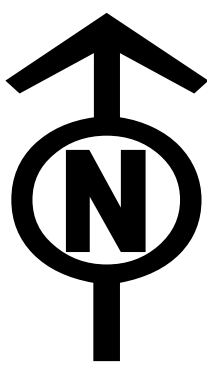
NATIONAL GRID
 (YORKSHIRE GREEN ENERGY
 ENABLEMENT PROJECT) ORDER
 LAND AFFECTED PLAN
 REGULATION 5(2)(i) - (i)
 SECTION C, SHEET 3 OF 9

nationalgrid

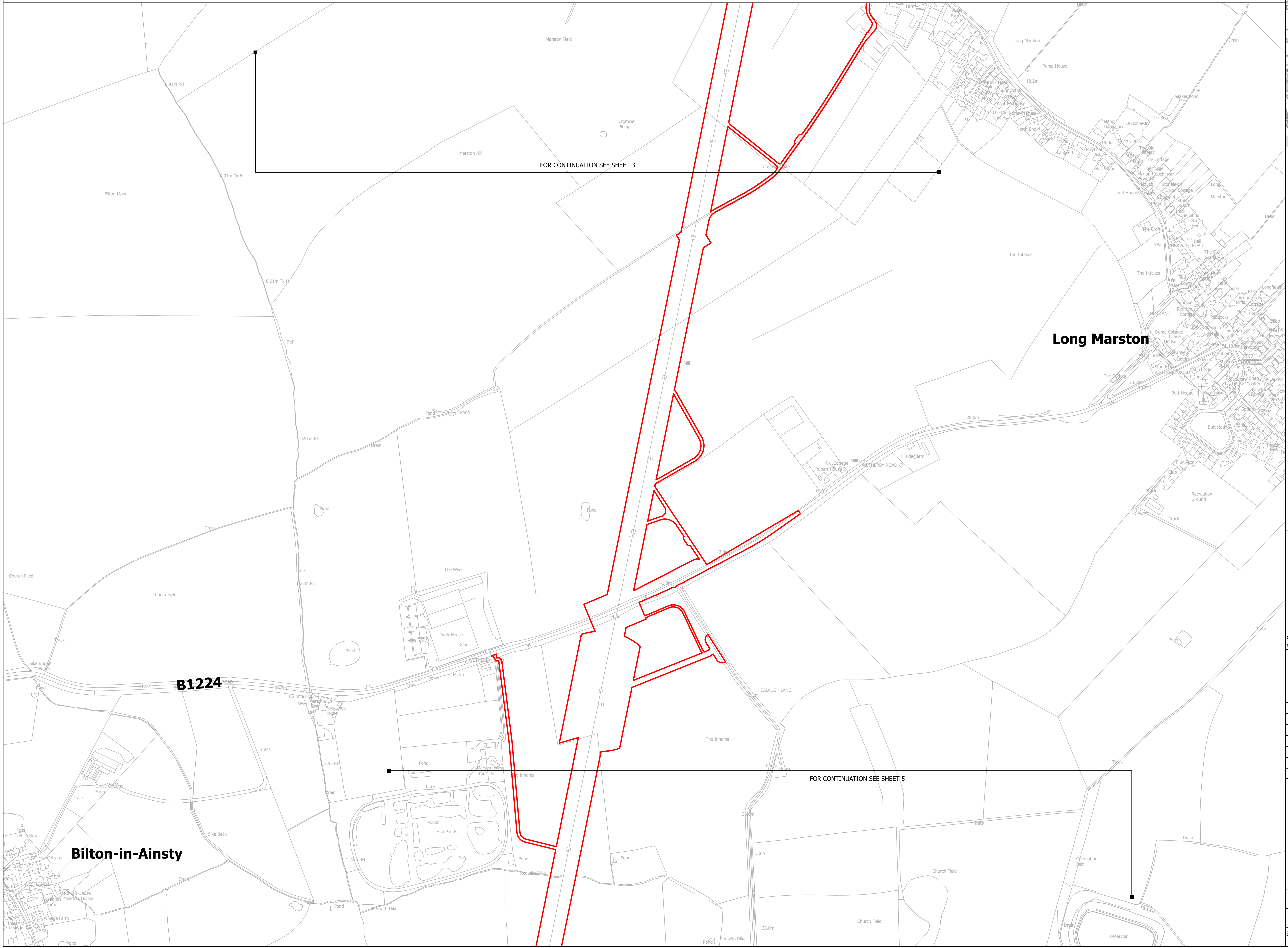
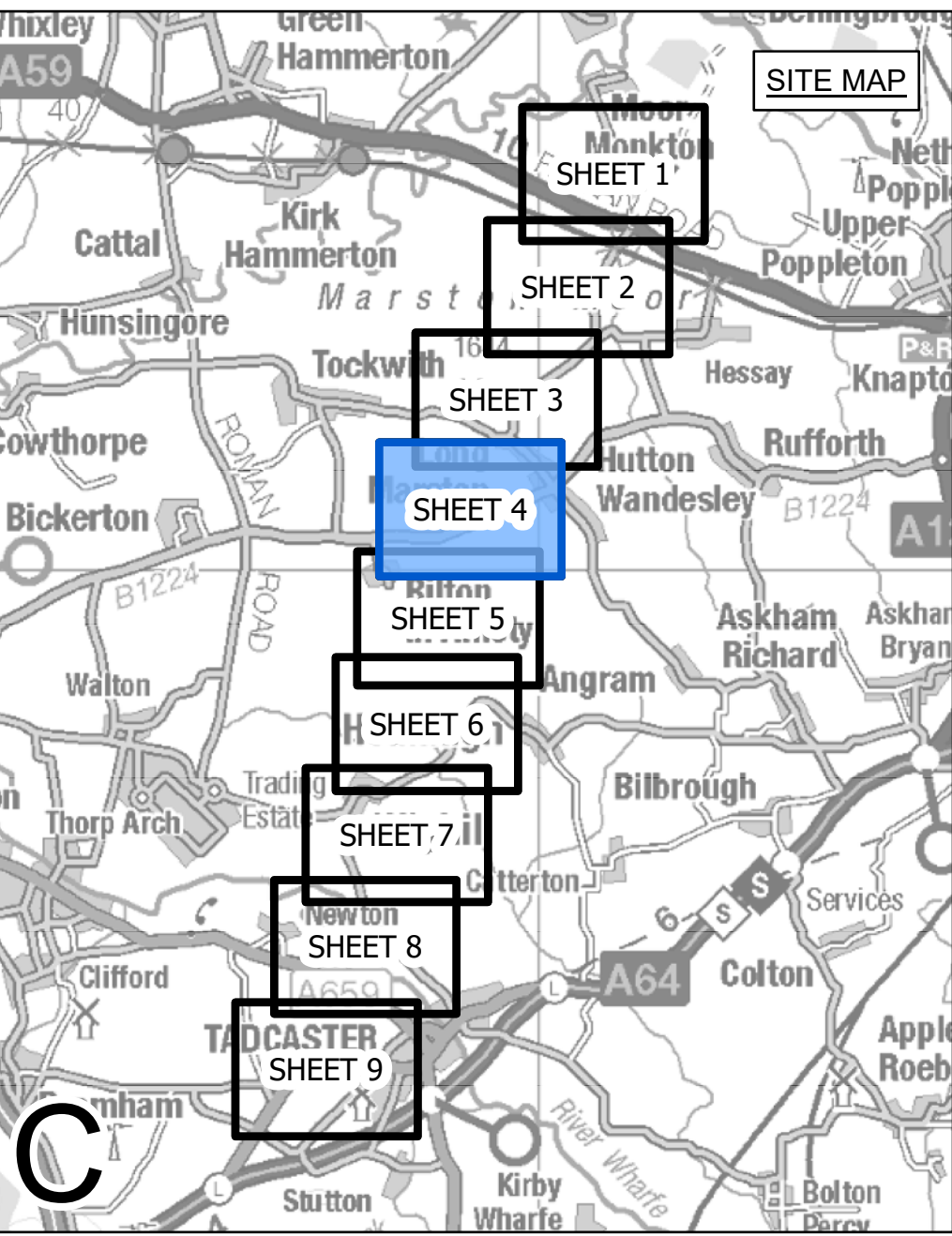
Application Number: EN020024

National Grid Drawing Reference: DCO_C/LA/PS/03

| Scale | Sheet Size | Sheet | Issue |
|---------|------------|--------------|-------|
| 1:2,500 | A0 | SHEET 3 OF 9 | A |



NATIONAL GRID (YORKSHIRE GREEN ENERGY ENABLEMENT PROJECT) ORDER
 LAND AFFECTED PLAN
 REGULATION 5(2)(i) - (i)
 SECTION C, SHEET 4 OF 9



LEGEND
 - - - LOCAL AUTHORITY BOUNDARY
 = SECTION BOUNDARY
 [Red Outline] ORDER LIMITS

Notes
 This drawing is scaled at paper size A0, therefore any prints taken at smaller sizes will affect accuracy of the measurement units and should not be scaled against.
 For additional detail on the plan suites, please refer to Document 2.3 Plan Guidance Document, located in Volume 2 of the DCO Application.
 The local authorities' boundaries and titles are correct at the time of submission. North Yorkshire County Council and its 7 districts are expected to form a new single council (North Yorkshire Council) on 1 April 2023.

Coordinate System: British National Grid
 Sheet X Centroid Coordinate: 449024 Sheet Y Centroid Coordinate: 450854

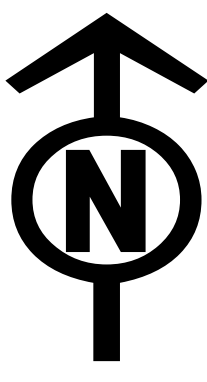


BACKGROUND MAPPING INFORMATION HAS BEEN REPRODUCED FROM THE ORDNANCE SURVEY BY PERMISSION OF ORDNANCE SURVEY OF THE CONTROLLER OF HER MAJESTY'S STATIONERY OFFICE. CROWN COPYRIGHT ORDNANCE SURVEY © BLUESKY INTERNATIONAL LTD © NATIONAL GRID ELECTRICITY - 100024241.

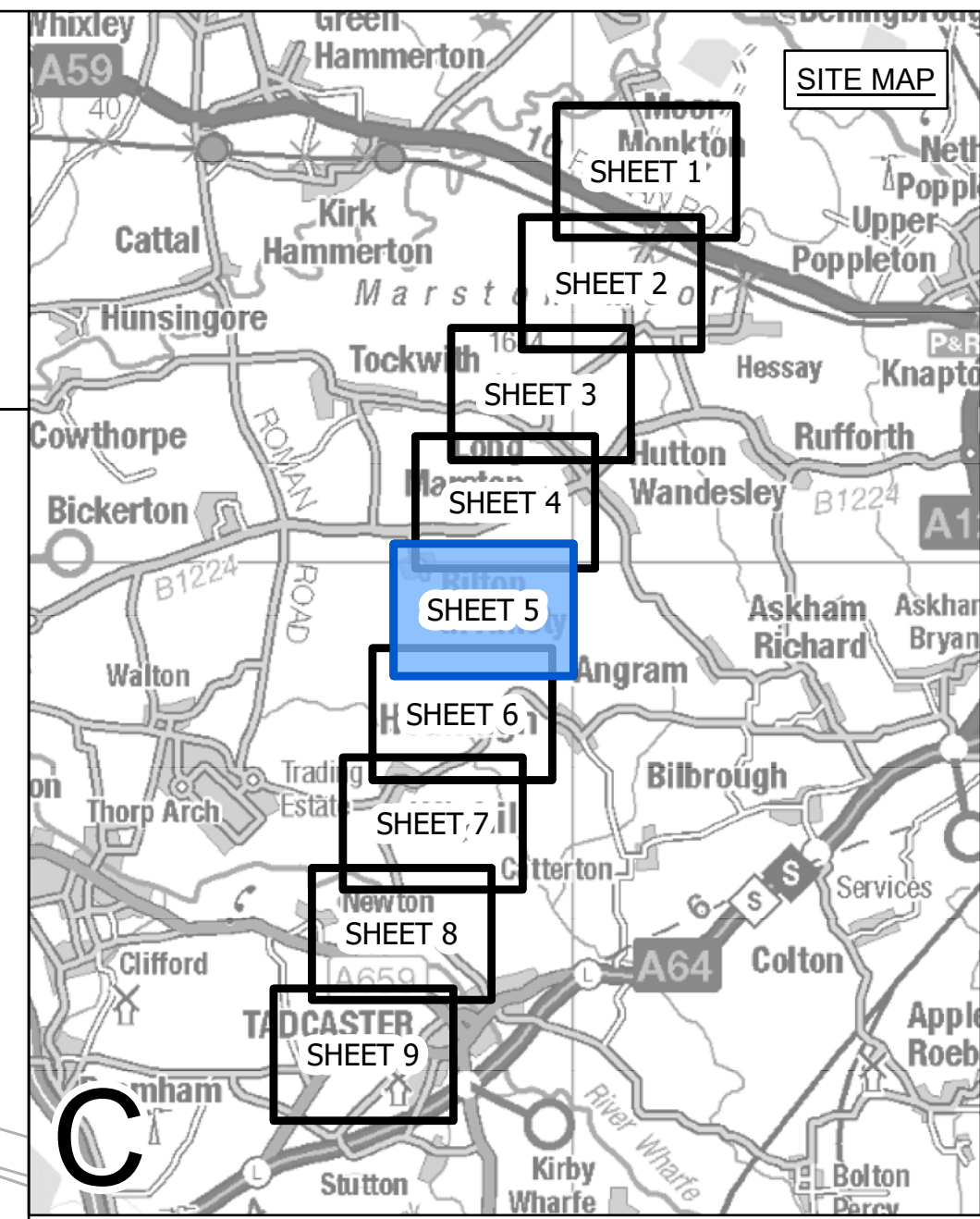
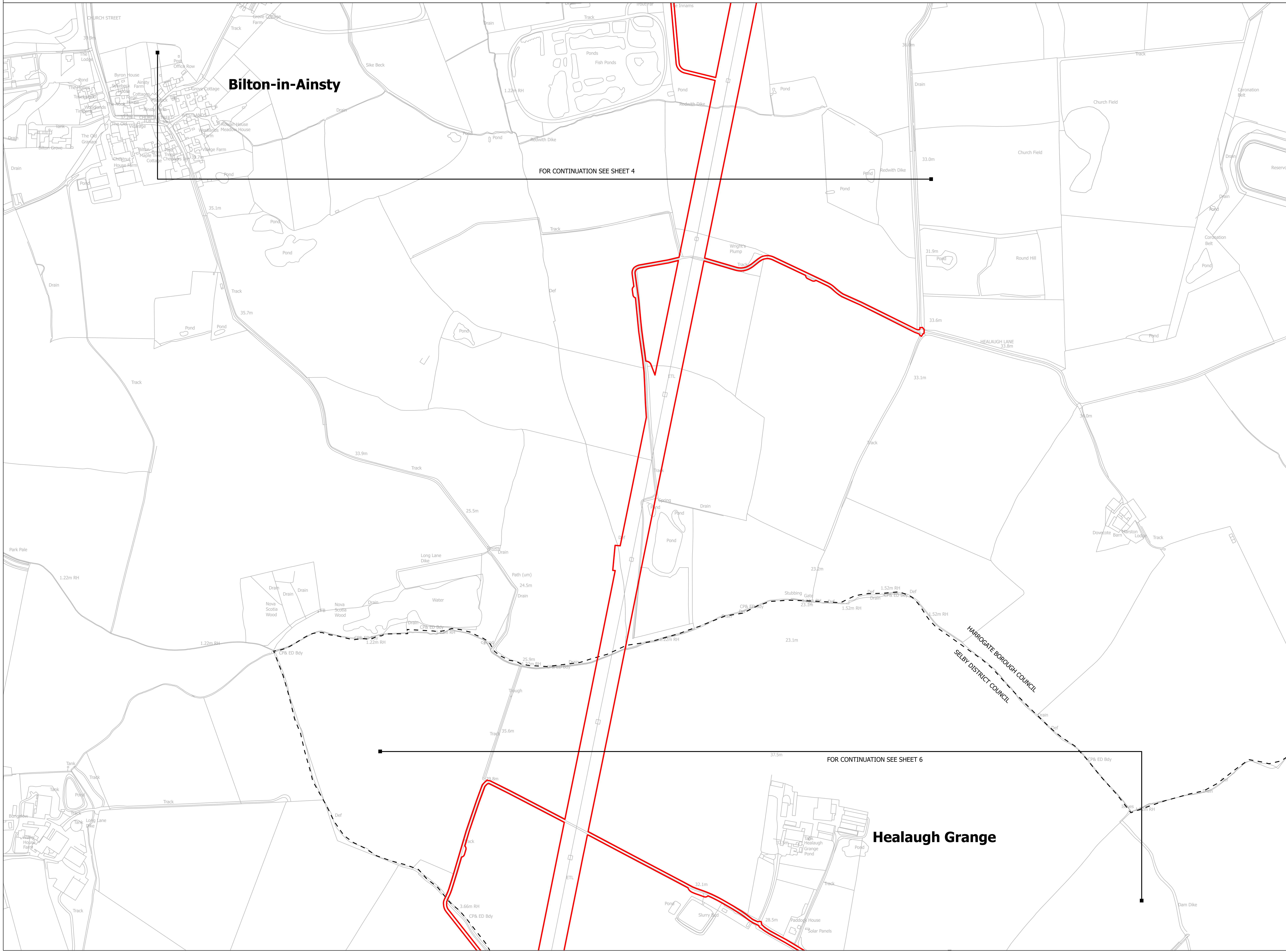
| Issue | Date | Remarks | Drawn | Checked | Approved |
|-------|------------|--------------------|-------|---------|----------|
| A | 01/11/2022 | FOR DCO SUBMISSION | JHa | SF | EMD |

Title
 NATIONAL GRID
 (YORKSHIRE GREEN ENERGY
 ENABLEMENT PROJECT) ORDER
 LAND AFFECTED PLAN
 REGULATION 5(2)(i) - (i)
 SECTION C, SHEET 4 OF 9

| | | | | |
|---------------------------------|------------|----------------|-------|--|
| Application Number | | EN020024 | | |
| National Grid Drawing Reference | | DCO_C/LA/PS/04 | | |
| Scale | Sheet Size | Sheet | Issue | |
| 1:2,500 | A0 | SHEET 4 OF 9 | A | |



NATIONAL GRID (YORKSHIRE GREEN ENERGY ENABLEMENT PROJECT) ORDER
 LAND AFFECTED PLAN
 REGULATION 5(2)(i) - (i)
 SECTION C, SHEET 5 OF 9



LEGEND

- LOCAL AUTHORITY BOUNDARY
- SECTION BOUNDARY
- ORDER LIMITS

Notes

This drawing is scaled at paper size A0, therefore any prints taken at smaller sizes will affect accuracy of the measurement units and should not be scaled against.

For additional detail on the plan suites, please refer to Document 2.3 Plan Guidance Document, located in Volume 2 of the DCO Application.

The local authorities' boundaries and titles are correct at the time of submission. North Yorkshire County Council and its 7 districts are expected to form a new single council (North Yorkshire Council) on 1 April 2023.

Coordinate System: British National Grid
 Sheet X Centroid Coordinate: 448712 Sheet Y Centroid Coordinate: 449318



BACKGROUND MAPPING INFORMATION HAS BEEN REPRODUCED FROM THE ORDNANCE SURVEY BY PERMISSION OF ORDNANCE SURVEY OF THE CONTROLLER OF HER MAJESTY'S STATIONERY OFFICE. CROWN COPYRIGHT ORDNANCE SURVEY ©. BLUESKY INTERNATIONAL LTD ©. NATIONAL GRID ELECTRICITY - 100024241.

| Issue | Date | Remarks | Drawn | Checked | Approved |
|-------|------------|--------------------|-------|---------|----------|
| A | 01/11/2022 | FOR DCO SUBMISSION | JHa | SF | EMD |

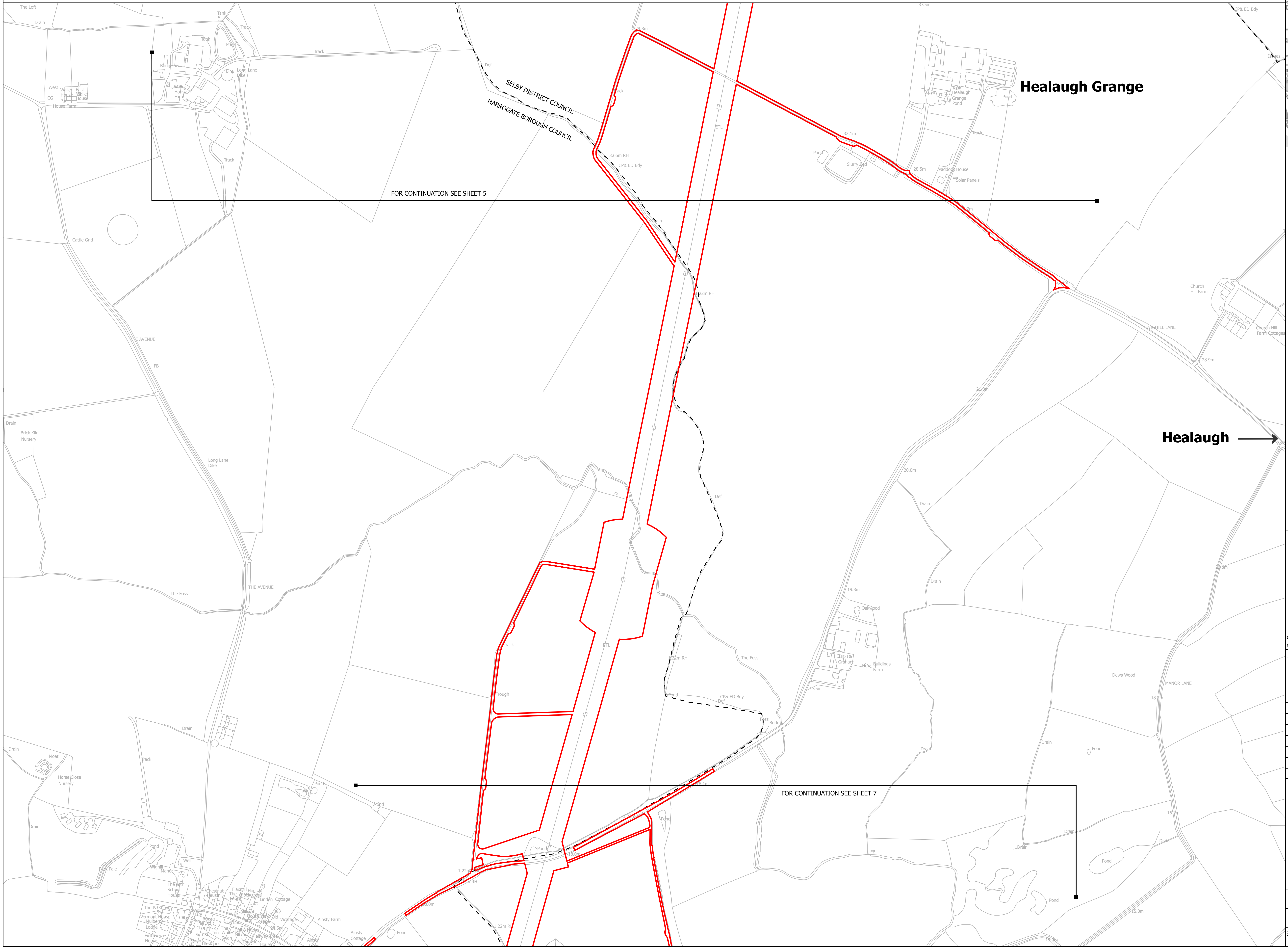
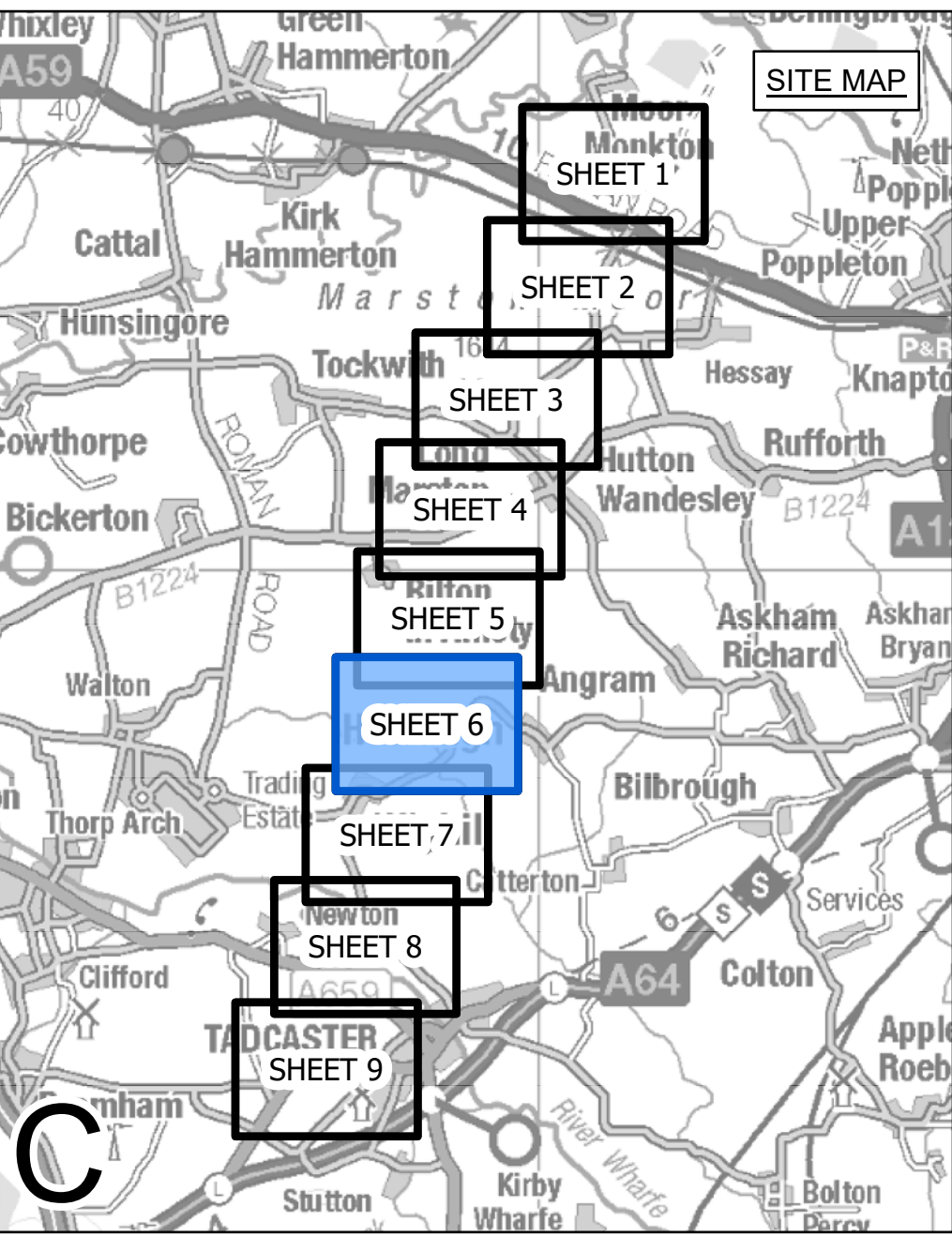
Title

NATIONAL GRID
 (YORKSHIRE GREEN ENERGY
 ENABLEMENT PROJECT) ORDER
 LAND AFFECTED PLAN
 REGULATION 5(2)(i) - (i)
 SECTION C, SHEET 5 OF 9

| | | | |
|---|------------|--------------|-------|
| nationalgrid | | | |
| Application Number | EN020024 | | |
| National Grid Drawing Reference DCO_C/LA/PS/05 | | | |
| Scale | Sheet Size | Sheet | Issue |
| 1:2,500 | A0 | SHEET 5 OF 9 | A |



NATIONAL GRID (YORKSHIRE GREEN ENERGY ENABLEMENT PROJECT) ORDER
 LAND AFFECTED PLAN
 REGULATION 5(2)(i) - (i)
 SECTION C, SHEET 6 OF 9



LEGEND

- - - LOCAL AUTHORITY BOUNDARY
- ▬ SECTION BOUNDARY
- ▬ ORDER LIMITS

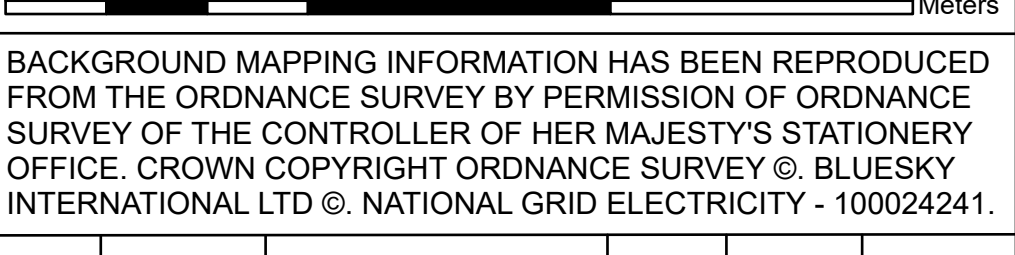
Notes

This drawing is scaled at paper size A0, therefore any prints taken at smaller sizes will affect accuracy of the measurement units and should not be scaled against.

For additional detail on the plan suites, please refer to Document 2.3 Plan Guidance Document, located in Volume 2 of the DCO Application.

The local authorities' boundaries and titles are correct at the time of submission. North Yorkshire County Council and its 7 districts are expected to form a new single council (North Yorkshire Council) on 1 April 2023.

Coordinate System: British National Grid
 Sheet X Centroid Coordinate: 448409 Sheet Y Centroid Coordinate: 447826



BACKGROUND MAPPING INFORMATION HAS BEEN REPRODUCED FROM THE ORDNANCE SURVEY BY PERMISSION OF ORDNANCE SURVEY OF THE CONTROLLER OF HER MAJESTY'S STATIONERY OFFICE. CROWN COPYRIGHT ORDNANCE SURVEY ©. BLUESKY INTERNATIONAL LTD ©. NATIONAL GRID ELECTRICITY - 100024241.

| Issue | Date | Remarks | Drawn | Checked | Approved |
|-------|------------|--------------------|-------|---------|----------|
| A | 01/11/2022 | FOR DCO SUBMISSION | JHa | SF | EMD |

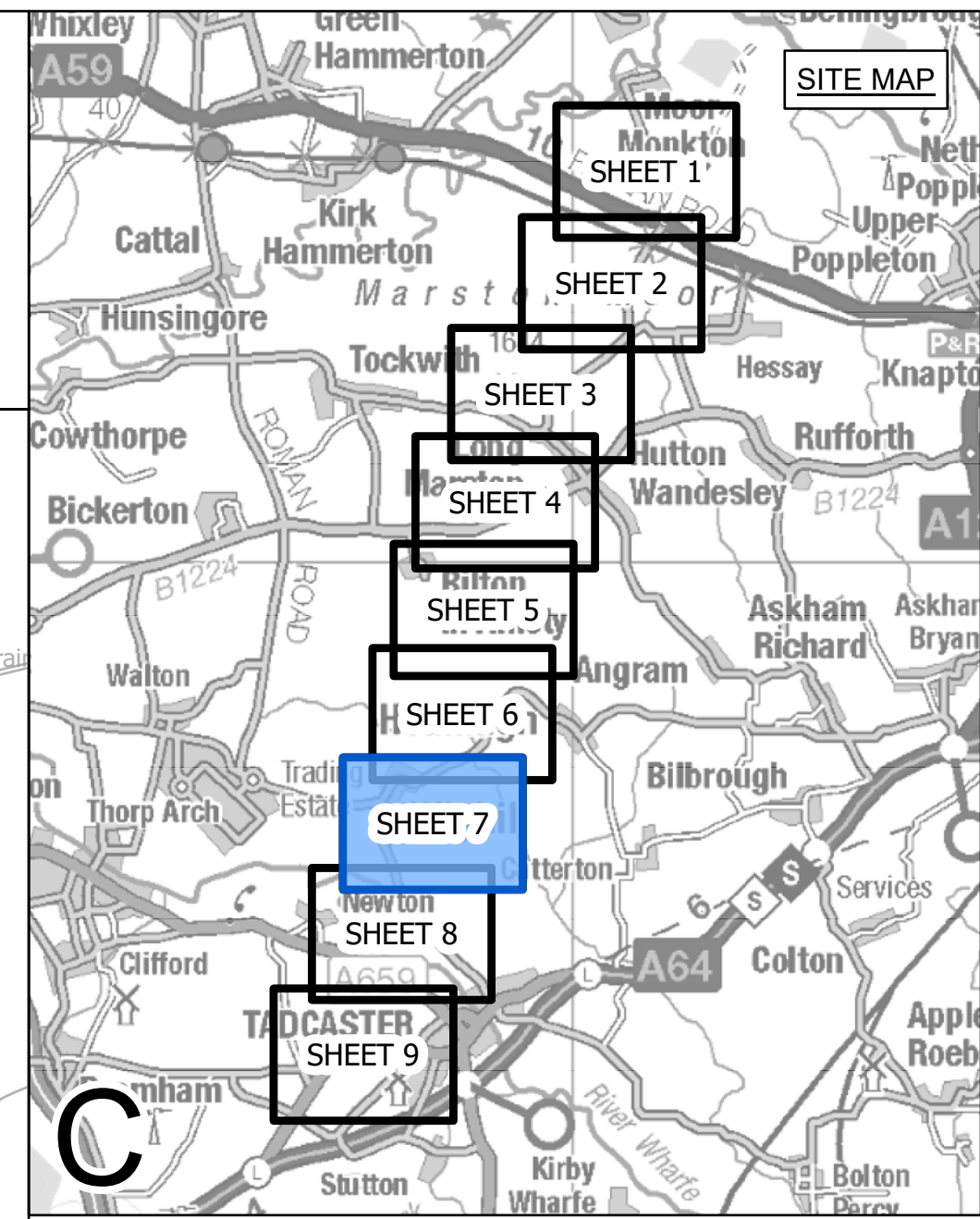
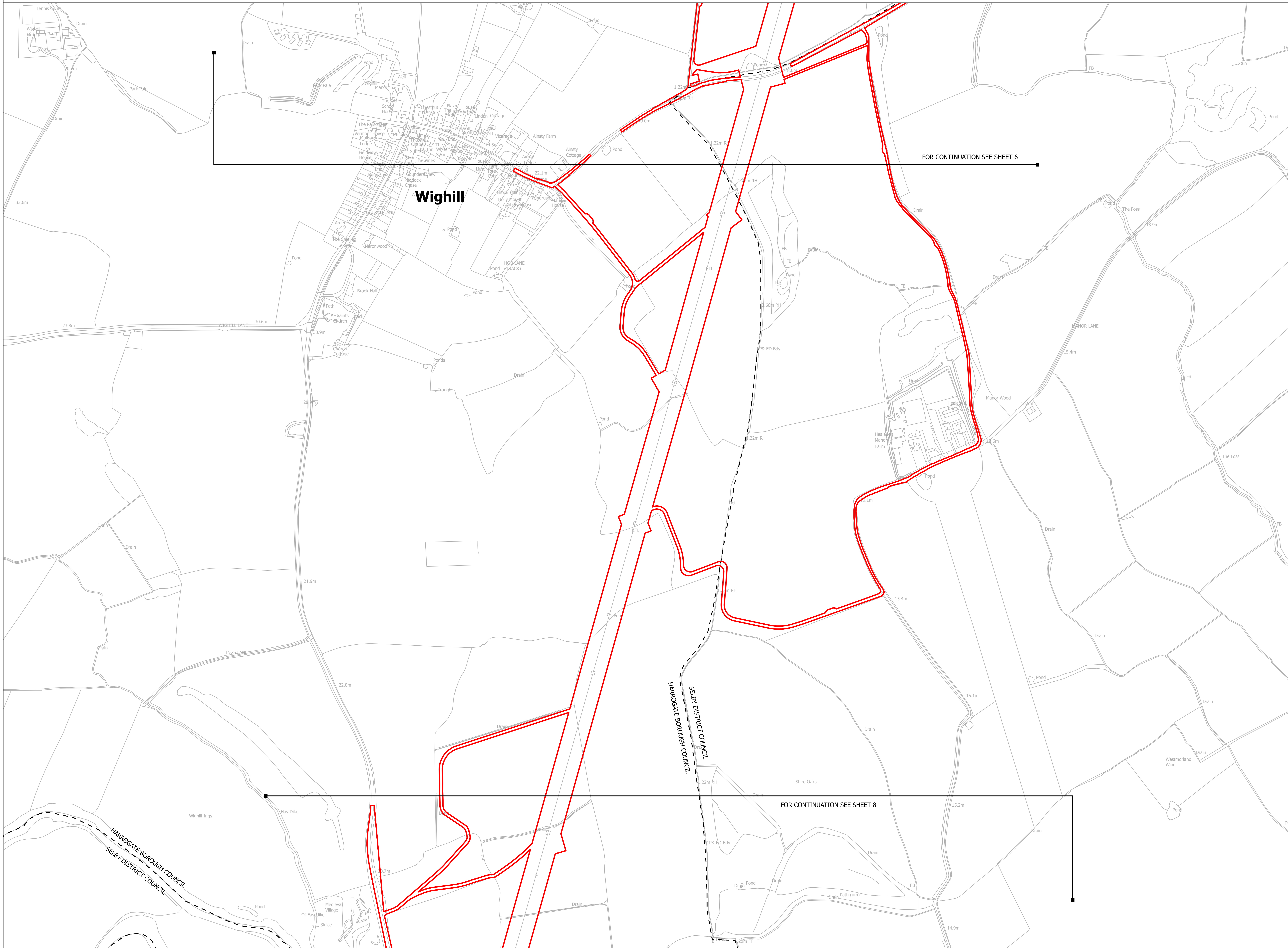
Title

NATIONAL GRID
 (YORKSHIRE GREEN ENERGY
 ENABLEMENT PROJECT) ORDER
 LAND AFFECTED PLAN
 REGULATION 5(2)(i) - (i)
 SECTION C, SHEET 6 OF 9

| | | | |
|---------------------------------|------------|--------------|-------|
| nationalgrid | | | |
| Application Number | EN020024 | | |
| National Grid Drawing Reference | | | |
| DCO_C/LA/PS/06 | | | |
| Scale | Sheet Size | Sheet | Issue |
| 1:2,500 | A0 | SHEET 6 OF 9 | A |



NATIONAL GRID (YORKSHIRE GREEN ENERGY ENABLEMENT PROJECT) ORDER
 LAND AFFECTED PLAN
 REGULATION 5(2)(i) - (i)
 SECTION C, SHEET 7 OF 9



- LEGEND**
- LOCAL AUTHORITY BOUNDARY
 - - - SECTION BOUNDARY
 - ▭ ORDER LIMITS

Notes

This drawing is scaled at paper size A0, therefore any prints taken at smaller sizes will affect accuracy of the measurement units and should not be scaled against.

For additional detail on the plan suites, please refer to Document 2.3 Plan Guidance Document, located in Volume 2 of the DCO Application.

The local authorities' boundaries and titles are correct at the time of submission. North Yorkshire County Council and its 7 districts are expected to form a new single council (North Yorkshire Council) on 1 April 2023.

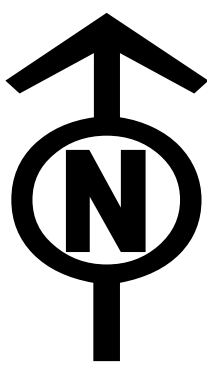
Coordinate System: British National Grid
 Sheet X Centroid Coordinate: 447986 Sheet Y Centroid Coordinate: 446280

BACKGROUND MAPPING INFORMATION HAS BEEN REPRODUCED FROM THE ORDNANCE SURVEY BY PERMISSION OF ORDNANCE SURVEY OF THE CONTROLLER OF HER MAJESTY'S STATIONERY OFFICE. CROWN COPYRIGHT ORDNANCE SURVEY ©. BLUESKY INTERNATIONAL LTD ©. NATIONAL GRID ELECTRICITY - 100024241.

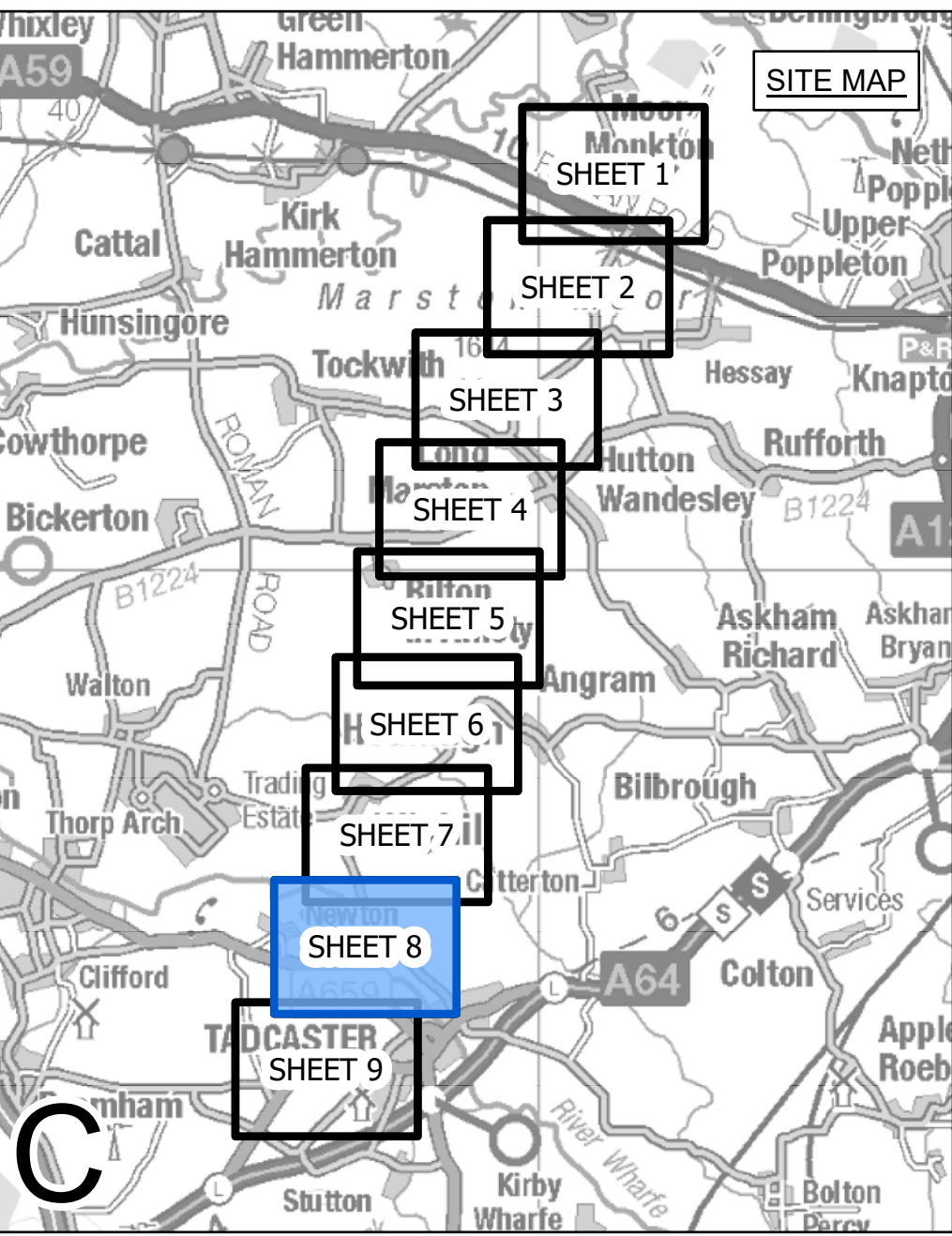
| Issue | Date | Remarks | Drawn | Checked | Approved |
|-------|------------|--------------------|-------|---------|----------|
| A | 01/11/2022 | FOR DCO SUBMISSION | JHa | SF | EMD |

**NATIONAL GRID (YORKSHIRE GREEN ENERGY ENABLEMENT PROJECT) ORDER
 LAND AFFECTED PLAN
 REGULATION 5(2)(i) - (i)
 SECTION C, SHEET 7 OF 9**

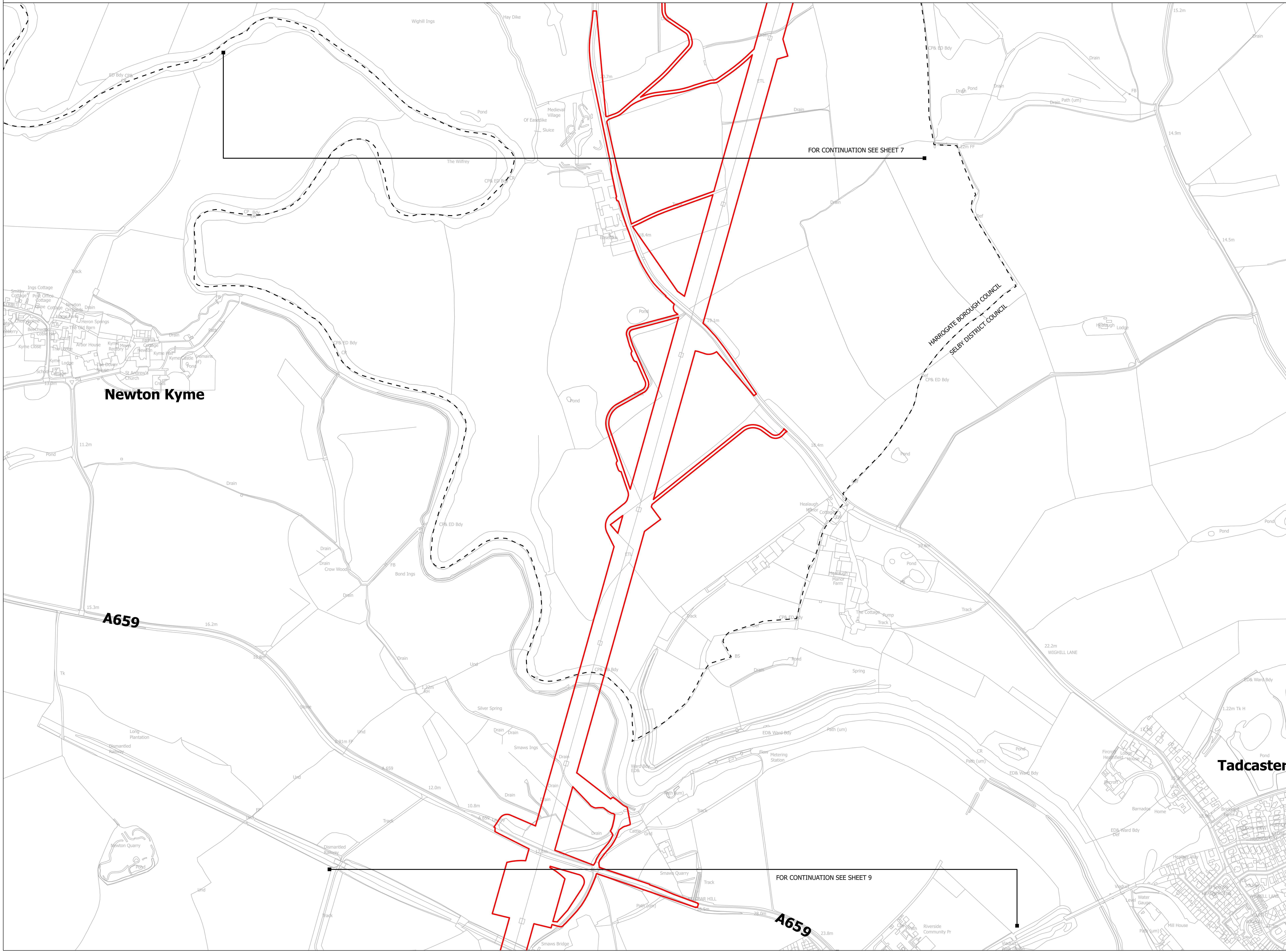
| | | | | |
|---------------------------------|------------|--------------|-------|--|
| Application Number | | EN020024 | | |
| National Grid Drawing Reference | | | | |
| DCO_C/LA/PS/07 | | | | |
| Scale | Sheet Size | Sheet | Issue | |
| 1:2,500 | A0 | SHEET 7 OF 9 | A | |



NATIONAL GRID (YORKSHIRE GREEN ENERGY ENABLEMENT PROJECT) ORDER
 LAND AFFECTED PLAN
 REGULATION 5(2)(i) - (i)
 SECTION C, SHEET 8 OF 9



- LEGEND**
- - - LOCAL AUTHORITY BOUNDARY
 - ▬ SECTION BOUNDARY
 - ▭ ORDER LIMITS



Notes

This drawing is scaled at paper size A0, therefore any prints taken at smaller sizes will affect accuracy of the measurement units and should not be scaled against.

For additional detail on the plan suites, please refer to Document 2.3 Plan Guidance Document, located in Volume 2 of the DCO Application.

The local authorities' boundaries and titles are correct at the time of submission. North Yorkshire County Council and its 7 districts are expected to form a new single council (North Yorkshire Council) on 1 April 2023.

Coordinate System: British National Grid
 Sheet X Centroid Coordinate: 447542 Sheet Y Centroid Coordinate: 444682



BACKGROUND MAPPING INFORMATION HAS BEEN REPRODUCED FROM THE ORDNANCE SURVEY BY PERMISSION OF ORDNANCE SURVEY OF THE CONTROLLER OF HER MAJESTY'S STATIONERY OFFICE. CROWN COPYRIGHT ORDNANCE SURVEY ©. BLUESKY INTERNATIONAL LTD ©. NATIONAL GRID ELECTRICITY - 100024241.

| Issue | Date | Remarks | Drawn | Checked | Approved |
|-------|------------|--------------------|-------|---------|----------|
| A | 01/11/2022 | FOR DCO SUBMISSION | JHa | SF | EMD |

Title

NATIONAL GRID
 (YORKSHIRE GREEN ENERGY
 ENABLEMENT PROJECT) ORDER
 LAND AFFECTED PLAN
 REGULATION 5(2)(i) - (i)
 SECTION C, SHEET 8 OF 9



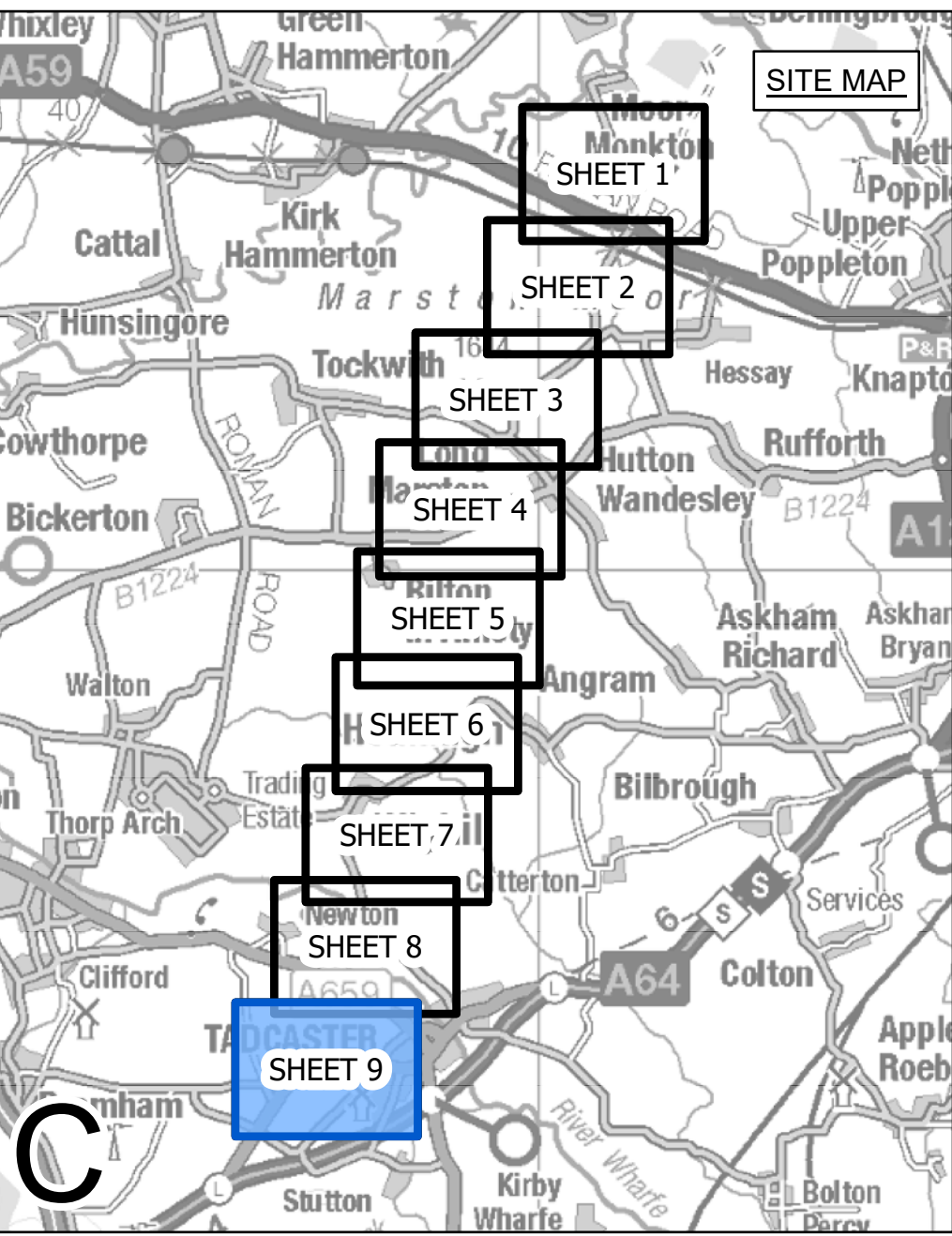
Application Number: EN020024

National Grid Drawing Reference: DCO_C/LA/PS/08

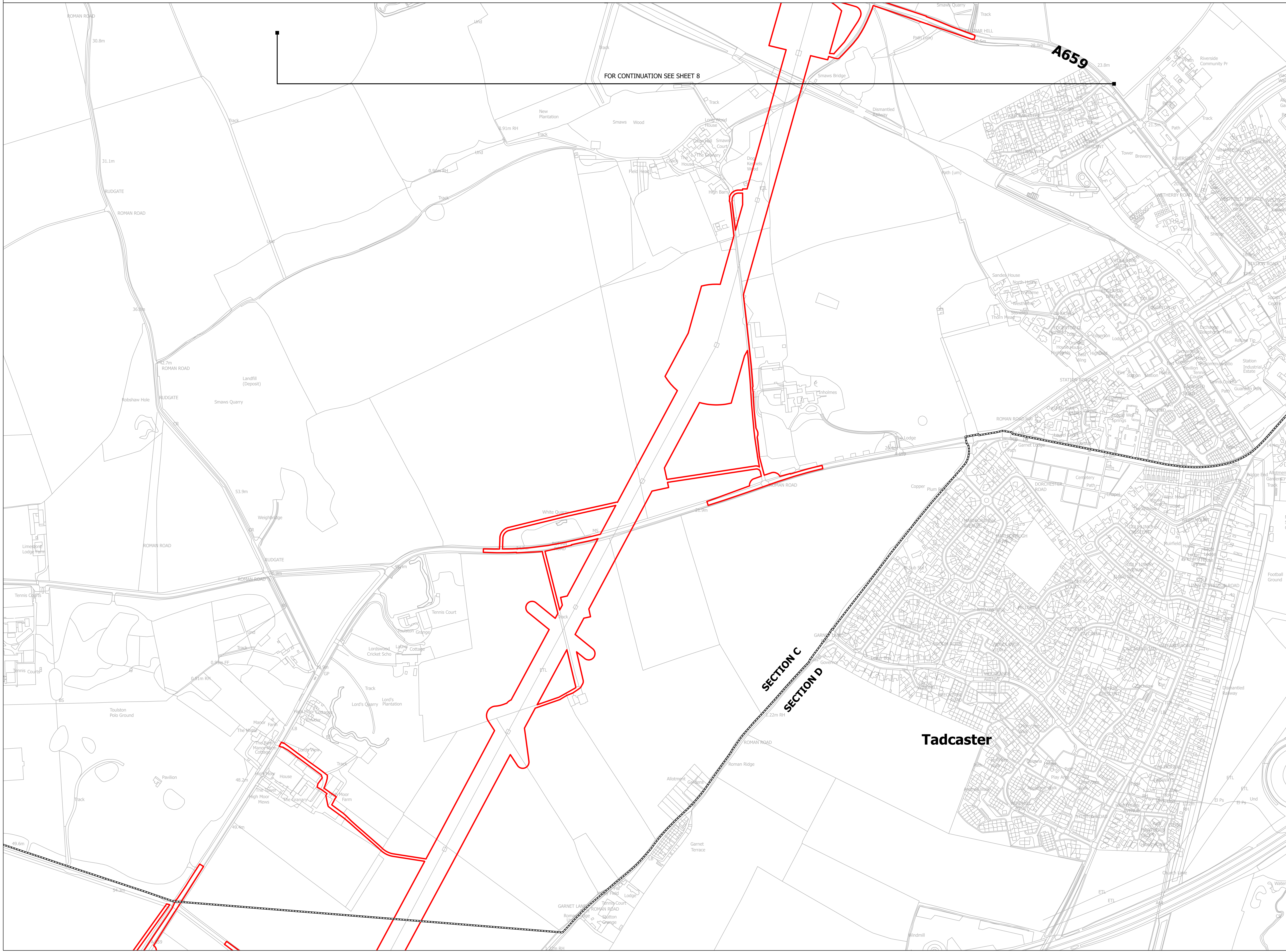
| Scale | Sheet Size | Sheet | Issue |
|---------|------------|--------------|-------|
| 1:2,500 | A0 | SHEET 8 OF 9 | A |



NATIONAL GRID (YORKSHIRE GREEN ENERGY ENABLEMENT PROJECT) ORDER
 LAND AFFECTED PLAN
 REGULATION 5(2)(i) - (i)
 SECTION C, SHEET 9 OF 9



- LEGEND**
- LOCAL AUTHORITY BOUNDARY
 - SECTION BOUNDARY
 - ORDER LIMITS



Notes

This drawing is scaled at paper size A0, therefore any prints taken at smaller sizes will affect accuracy of the measurement units and should not be scaled against.

For additional detail on the plan suites, please refer to Document 2.3 Plan Guidance Document, located in Volume 2 of the DCO Application.

The local authorities' boundaries and titles are correct at the time of submission. North Yorkshire County Council and its 7 districts are expected to form a new single council (North Yorkshire Council) on 1 April 2023.

Coordinate System: British National Grid
 Sheet X Centroid Coordinate: 446952 Sheet Y Centroid Coordinate: 442956



BACKGROUND MAPPING INFORMATION HAS BEEN REPRODUCED FROM THE ORDNANCE SURVEY BY PERMISSION OF ORDNANCE SURVEY OF THE CONTROLLER OF HER MAJESTY'S STATIONERY OFFICE. CROWN COPYRIGHT ORDNANCE SURVEY ©. BLUESKY INTERNATIONAL LTD ©. NATIONAL GRID ELECTRICITY - 100024241.

| Issue | Date | Remarks | Drawn | Checked | Approved |
|-------|------------|--------------------|-------|---------|----------|
| A | 01/11/2022 | FOR DCO SUBMISSION | JHa | SF | EMD |

Title

NATIONAL GRID
 (YORKSHIRE GREEN ENERGY
 ENABLEMENT PROJECT) ORDER
 LAND AFFECTED PLAN
 REGULATION 5(2)(i) - (i)
 SECTION C, SHEET 9 OF 9



Application Number: EN020024

National Grid Drawing Reference: DCO_C/LA/PS/09

| Scale | Sheet Size | Sheet | Issue |
|---------|------------|--------------|-------|
| 1:2,500 | A0 | SHEET 9 OF 9 | A |

**National Grid plc
National Grid House,
Warwick Technology Park,
Gallows Hill, Warwick.
CV34 6DA United Kingdom**

**Registered in England and
Wales
No. 4031152**

